

2023 Annual Report to the Community

Burnside Primary School

Burnside Primary School Number:0699

Partnership: Central East



School principal:

Joanne Porter

Signature

Date of endorsement:

20/02/2024



Context Statement

Burnside Primary School caters for students from R-6. At the time of this report, the enrolment in 2023 is 676. Burnside Primary School is classified as Category 7 on the Department for Education Index of Educational Disadvantage. At the time of this report, the school population includes, 4% students with disabilities, 9% students with English as an additional language or dialect (EALD) funded background. Further information about the school is available on the school's website (including its context statement), as well as the My School website.

2023 Governing Council Chairperson Report

With a much smaller number of vacancies for the 2023 Governing Council (GC), we still received a healthy interest from our parent community, both in nominations and attendance at the AGM.

2023 was a year that we really started to 'live with COVID' in a more normal way, with very few restrictions on the way that we could conduct activities in our daily lives.

Firstly, I would like to acknowledge the wonderful job that Angela Scarfo did as chairperson prior to my election and thank her for her service to the school for the duration of her time on the GC.

We have a very strong and enthusiastic group of parents that make up the GC, bringing perspectives from diverse backgrounds and unique skills that we have been able to draw on to successfully navigate the challenges that we come up against over the last 12 months.

Some key pieces of work that included GC involvement were completed throughout the year. The oval upgrade, which provides a far better surface for the children to play on, sporting teams to practice on and the physical education team to utilise, was completed and continues to have increased availability and use. A master plan document for possible upgrade and improvement projects throughout the school was commissioned, completed, and accepted by the Grounds & Maintenance subcommittee and GC. Our amazing P&F team ran, as they do year in year out, several outstanding events to raise money towards key school projects that will make BPS an even greater place for your children to learn and provides great opportunities for our BPS families to socialise and enjoy being part of the school community.

During the middle of the year, we learned that Susan Copeland had won a position as an Education Director within the department and would be moving on from BPS earlier than expected. Jo Porter did a great job in stepping up as acting principal for the latter half of the year and kept the school running smoothly.

I'm very happy to have been involved in the recruitment process of our new principal, Rachel McLennan, and very excited about the opportunities and programs that she is looking at implementing.

We have a great leadership team at BPS that are very passionate about our children's success that is only getting stronger in 2024.

Lastly, but by no means the least, I'd like to thank all the parents and staff that have contributed their time on the GC and its subcommittees over 2023, and especially acknowledge those that have decided not to continue with another tenure on the GC. Thank you for all your time and effort and the wonderful things that have been achieved during your time on the GC.

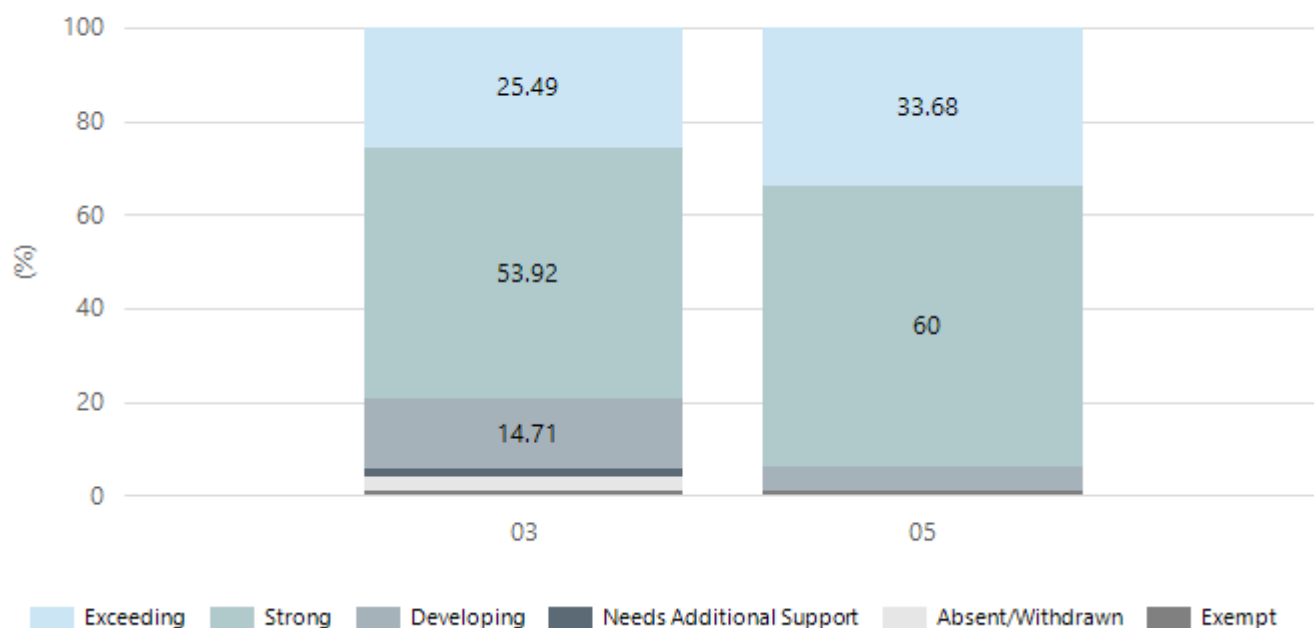
Anton Holmes

Governing Council Chairperson

NAPLAN Proficiency

In 2023, the Australian Curriculum, Assessment and Reporting Authority (ACARA) - a Commonwealth Independent statutory authority - announced changes to NAPLAN performance reporting. This new way of reporting by ACARA that NAPLAN results from 2023 will not be comparable to previous years. The new approach replaces the previous numerical NAPLAN bands and the national minimum standard.

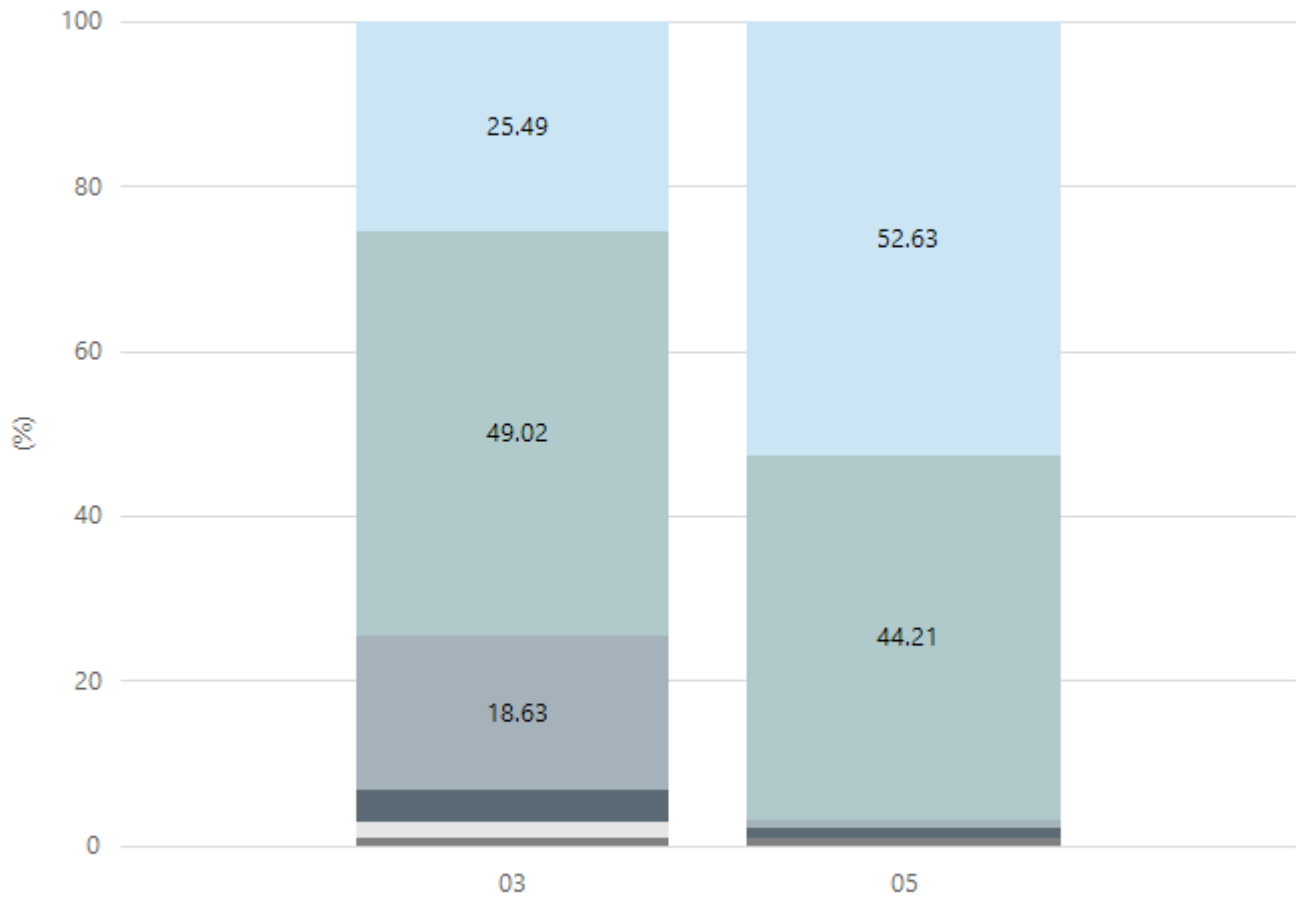
Numeracy



Year Level	03	05
Exceeding	26	32
Strong	55	57
Developing	15	5
Needs Additional Support	2	
Absent/Withdrawn	3	
Exempt	1	1
Total	102	95

Data Source: Department for Education Assessment Data Holdings, 2023. When there are less than six students in a cohort, no data is supplied.

Reading

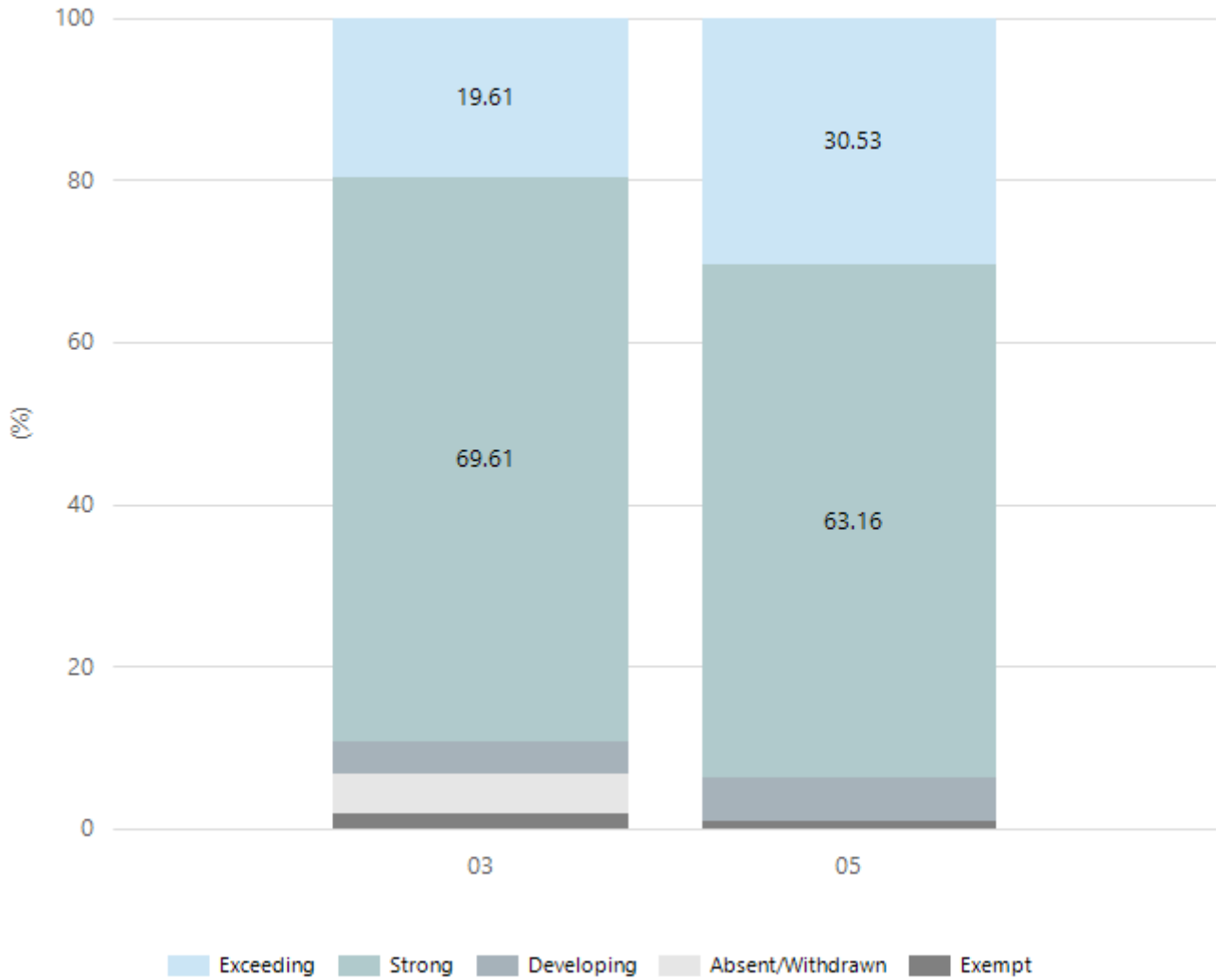


Exceeding Strong Developing Needs Additional Support Absent/Withdrawn Exempt

Year Level	03	05
Exceeding	26	50
Strong	50	42
Developing	19	1
Needs Additional Support	4	1
Absent/Withdrawn	2	
Exempt	1	1
Total	102	95

Data Source: Department for Education Assessment Data Holdings, 2023. When there are less than six students in a cohort, no data is supplied.

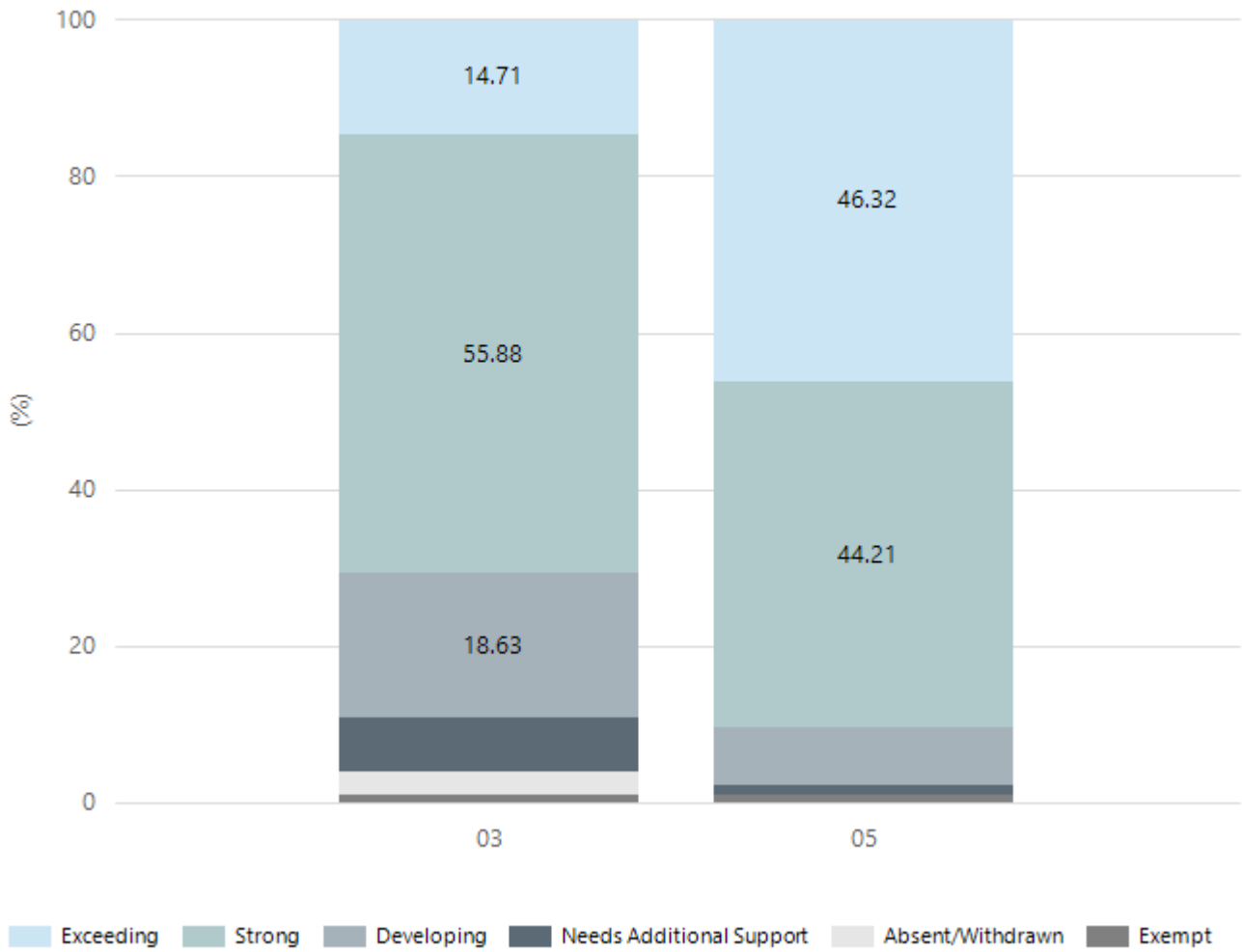
Writing



Year Level	03	05
Exceeding	20	29
Strong	71	60
Developing	4	5
Absent/Withdrawn	5	
Exempt	2	1
Total	102	95

Data Source: Department for Education Assessment Data Holdings, 2023. When there are less than six students in a cohort, no data is supplied.

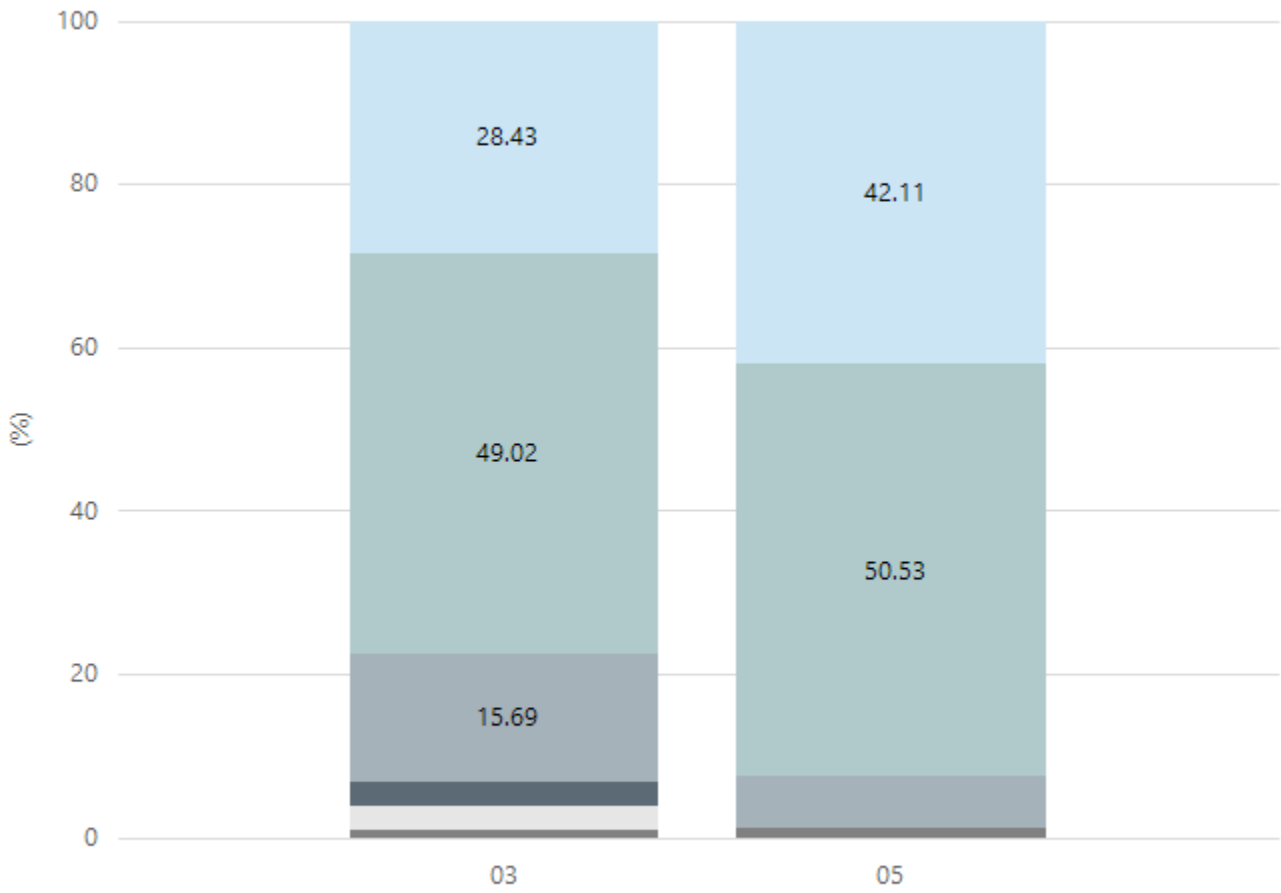
Grammar



Year Level	03	05
Exceeding	15	44
Strong	57	42
Developing	19	7
Needs Additional Support	7	1
Absent/Withdrawn	3	
Exempt	1	1
Total	102	95

Data Source: Department for Education Assessment Data Holdings, 2023. When there are less than six students in a cohort, no data is supplied.

Spelling



■ Exceeding
 ■ Strong
 ■ Developing
 ■ Needs Additional Support
 ■ Absent/Withdrawn
 ■ Exempt

Year Level	03	05
Exceeding	29	40
Strong	50	48
Developing	16	6
Needs Additional Support	3	
Absent/Withdrawn	3	
Exempt	1	1
Total	102	95

Data Source: Department for Education Assessment Data Holdings, 2023. When there are less than six students in a cohort, no data is supplied.

School Attendance

Year Level	2021	2022	2023
Reception	96.2%	90.3%	92.8%
Year 01	94.9%	91.2%	90.9%
Year 02	95.2%	93.6%	93.8%
Year 03	95.1%	92.1%	92.4%
Year 04	96.0%	91.7%	93.4%
Year 05	95.1%	91.0%	94.0%
Year 06	94.1%	89.5%	91.8%
Year 07	92.9%		
Total	94.9%	91.3%	92.7%

Data Source: Department for Education Attendance Data, Semester 1 Report 2023. A blank cell indicates there were no students enrolled. 'Primary Other' includes students enrolled in specialised education options. 'Secondary Other' includes students who have already spent a year at Year 12 and elected to undertake further study at Year 12.

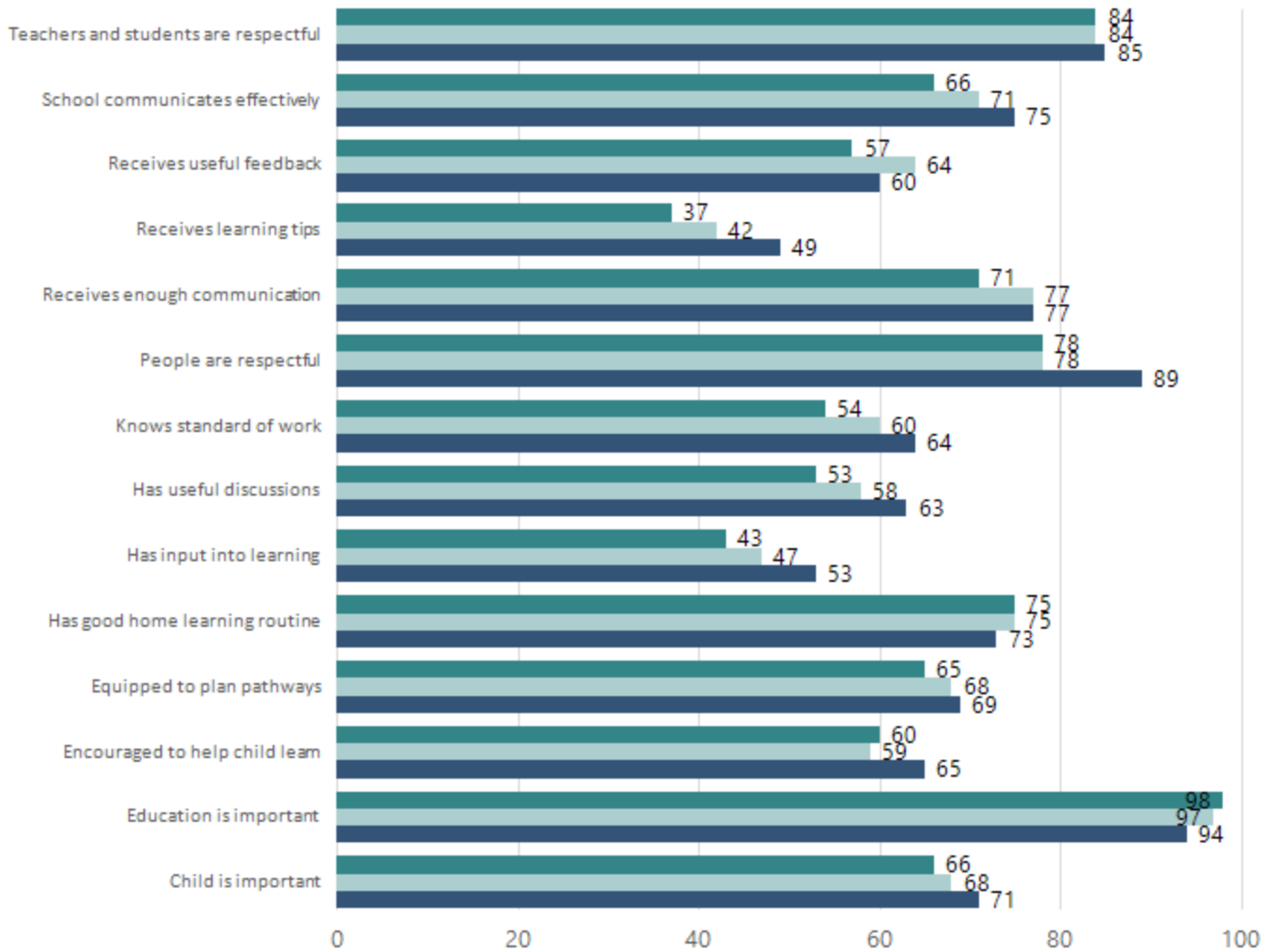
Attendance Comment

In South Australia, all children and young people must be in school from 6 years to 16 years old. They must attend a government or non-government school full time. From age 16 to 17 however, young people must attend school or an approved learning program (such as an apprenticeship, traineeship, accredited course or university). Schools and parents must encourage and support students to come to school every day. Parents and caregivers must make sure their child is enrolled in a school, and attends school all day and everyday it is open, unless a child is sick or has an approved exemption. Teachers and leaders actively follow up when a student misses school, including recording all absences and non-attendance. All schools in South Australia have local attendance procedures governed under the Education and Children's Services Regulations 2020.

Parent Opinion Survey Results

Proportion of agree/strongly agree response(%)

2021 2022 2023



Data Source: 2023 Department for Education Parent Opinions Survey, Term 3 2023.

Intended Destination

Leave Reason	Number	%
NG - ATTENDING NON-GOV SCHOOL IN SA	6	27.0%
NS - LEFT SA FOR NSW	4	18.0%
QL - LEFT SA FOR QLD	3	14.0%
TG - TRANSFERRED TO SA GOVERNMENT SCHOOL	9	41.0%

Data Source: Department for Education Destination Data Report, 2023. Data extract term 3 2023. Data shows recorded destinations for students that left the school in the previous year. Data is uploaded by schools in term 3 and may not reflect final or total figures at time of report creation.

Highest Qualifications held by the teaching workforce and workforce composition

All teachers at this school are qualified and registered with the SA Teachers Registration Board.

Qualification Level	Number of Qualifications
Bachelor's degrees or Diplomas	34
Postgraduate Qualifications	15

Data Source: Data extracted from Mandatory Workforce Information Collections as on the last pay date of June 2023. As self-reported by staff in the system.

Please note: Data includes staff who are Actively employed and on extended paid leave. Please note only the highest qualification of the Teaching staff is reported. Excludes any number of other certifications earned.

Workforce composition including indigenous staff

	Teaching Staff		Non-Teaching Staff	
	Indigenous	Non-Indigenous	Indigenous	Non-Indigenous
Full-Time Equivalents	0.0	42.8	0.0	14.2
Persons	0.0	49.0	0.0	23.0

Data Source: Data extracted from Mandatory Workforce Information Collection as on the last pay date of June 2023.

Please note: Data includes staff who are actively employed and on extended paid leave. "Indigenous category" is self-reported by staff in the system.

Financial Statement

Funding Source	Amount
Grants: State	6,875,242.40
Grants: Commonwealth	4,900.00
Parent Contributions	497,127.65
Fund Raising	54,746.65
Other	116,822.13

Data Source: School supplied data.